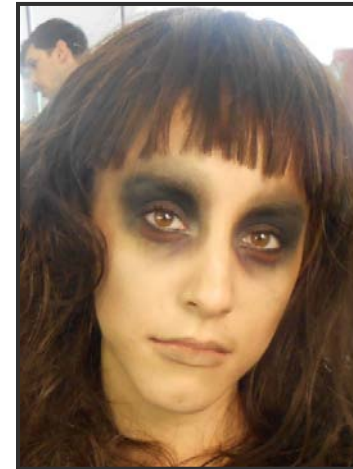


VILLAINS

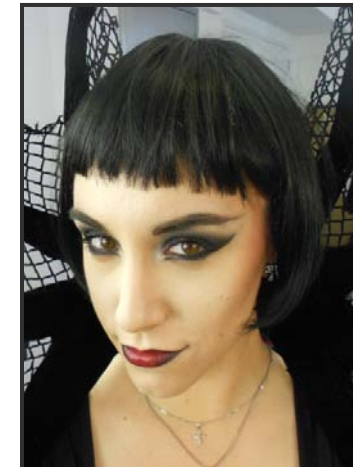
WITCH



ZOMBIE



VAMPIRE



CONTOURING

To achieve dimension, recreate structure and important distinctive features pertaining to the character, begin contouring high on the cheek ending at the lower portion of the cheek. This creates an elongated look that adds a villainous quality.

PRODUCT CHOICE

For more compelling and realistic makeup, select the correct tone of creams and powders.

LIGHT vs. DARK

To bring a 3-dimensional quality to the character and keep it from looking flat, contrast light and dark colors when highlighting and contouring.

RECOMMENDED PRODUCTS

- Sephora Collection False Eyelashes
- Sephora Collection Colorful Mono Eyeshadow
- Make Up For Ever Aqua Cream
- Make Up For Ever Flash Color
- Make Up For Ever Eyelashes
- DUO Eyelash Adhesive



- Build out the desired face shape with creams, then layer with powder for durability
- Use an angled blush brush to create sleek lines and add structure to the face
- For special effects mix speciality colors, greens, purples, or grays into complexion products